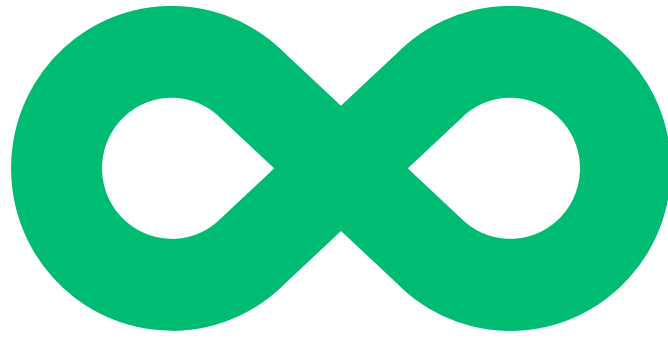


# User Manual

## Infinity:One





Infinity:One

For the latest updates and information, please visit:

[support.one-education.org](https://support.one-education.org)

## Notice

The information in this user's manual is protected by copyright laws, all parts of this manual, including the products and software described in it, can not be reproduced, transmitted, transcribed, stored in a retrieval system, nor translated into any language.

THE MANUFACTURER OR RESELLER SHALL NOT BE LIABLE FOR ERRORS OR OMISSIONS CONTAINED IN THIS MANUAL AND SHALL NOT BE LIABLE FOR ANY CONSEQUENTIAL DAMAGES, WHICH MAY RESULT FROM THE PERFORMANCE OR USE OF THIS MANUAL.

The illustrations in this user's manual are for reference only. Actual product specifications may vary with territories.

The information in this user's manual is subject to change without notice.

# TABLE OF CONTENTS

Notice .....	2
Preface .....	5
1.1 Regulations Information.....	6
1.2 Safety Instructions .....	8
1.3 Conventions for this Manual .....	10
1.4 Release History .....	11
Getting to know the basics .....	12
2.1 Product Overview .....	13
Getting started .....	19
3.1 Preparing your Infinity:One.....	20
3.2 How to insert/remove the Micro SD card.....	22
3.3 Cleaning the screen.....	23
BIOS setup .....	24
4.1 About BIOS Setup .....	25
4.1.1 When to Use BIOS Setup ?.....	25
4.1.2 How to Run BIOS Setup ?.....	25
4.2 BIOS Setup Menu.....	26

4.2.1 Main Menu.....	27
4.2.2 Advanced Menu.....	29
4.2.3 Security Menu.....	30
4.2.4 Boot Menu .....	32
4.2.5 Save & Exit Menu .....	33
The Battery Calibration Tool .....	34



**Chapter 1**

Preface

---

## 1.1 Regulations Information

### FCC-B Radio Frequency Interference Statement

This device complies with Part 15 of the FCC Rules. Operation is subject to the following two conditions: (1) this device may not cause harmful interference, and (2) this device must accept any interference received, including interference that may cause undesired operation. Any changes or modifications not expressly approved by the party responsible for compliance could void the authority to operate equipment.

This equipment has been tested and found to comply with the limits for a Class B digital device, pursuant to Part 15 of the FCC Rules. These limits are designed to provide reasonable protection against harmful interference in a residential installation. This equipment generates, uses and can radiate radio frequency energy and, if not installed and used in accordance with the instructions, may cause harmful interference to radio communications. However, there is no guarantee that interference will not occur in a particular installation. If this equipment does cause harmful interference to radio or television reception, which can be determined by turning the equipment off and on, the user is encouraged to try to correct the interference by one or more of the following measures:

- Reorient or relocate the receiving antenna.
- Increase the separation between the equipment and receiver.
- Connect the equipment into an outlet on a circuit different from that to which the receiver is connected.
- Consult the dealer or an experienced radio/TV technician for help.



**CAUTION:** Any changes or modifications not expressly approved by the guarantee of this device could void the user's authority to operate the equipment.

---



CAUTION: Ambient temperature of more than 35°C or less than 5°C

---

---

### ⦿ CE compliance

This device is classed as a technical information equipment (ITE) in class B and is intended for use in living room and office. The CE-mark approves the conformity by the EU-guidelines:

- EMC Directive 2004/108/EC,
- Low Voltage Directive 2006/95/EC,
- R&TTE Directive 1999/5/EC

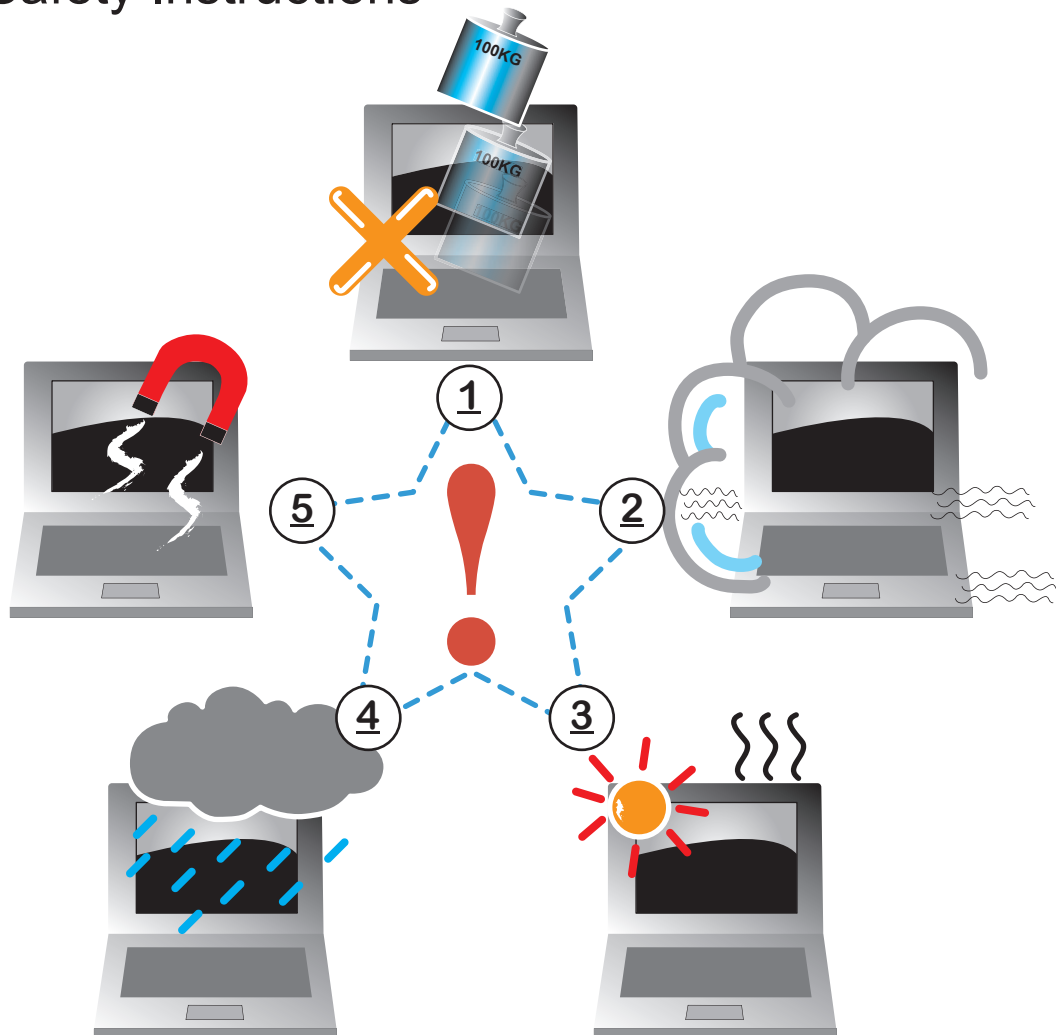
### ⦿ PREVENTION OF HEARING LOSS

Listening to music at high volume levels and for extended durations can damage one's hearing. In order to reduce the risk of damage to hearing, one should lower the volume to a safe, comfortable level, and reduce the amount of time listening at high levels. Headsets should comply with EN 50332-2 requirements.



---

## 1.2 Safety Instructions



- 1** Do not apply heavy pressure to the computer or subject it to any form of strong impact as this can damage the computer's components or otherwise cause it to malfunction.
- 2** Never cover or block the air vents including those located at the base of the computer. Never cover your computer or AC adaptor with any object.
- 3** To keep your computer in prime operating condition, protect your work area from direct sunlight.
- 4** Do NOT expose to or use near liquid, rain, or moisture. Do NOT use the modem during electrical storms.
- 5** Do not use or expose this device around magnetic fields as magnetic interference may affect the performance of the device.





CAUTION: RISK OF EXPLOSION IF BATTERY IS REPLACED BY AN INCORRECT TYPE  
DISPOSE OF USED BATTERIES ACCORDING TO THE INSTRUCTIONS.

Replace only with the same or equivalent type recommended by the manufacturer.

---



Dispose of used batteries according to the manufacturer's instructions.

---

## 1.3 Conventions for this Manual



CAUTION : This message contains important information that must be followed for safe operation.

---



---

NOTE : This message contains information for special situations.

---

---

## 1.4 Release History

Version	Date	Revision
1.0	01.2017	Initial release

---

## Chapter 2

# Getting to know the basics

---

## 2.1 Product Overview

Please become familiar with each component before you operate the Infinity:One.

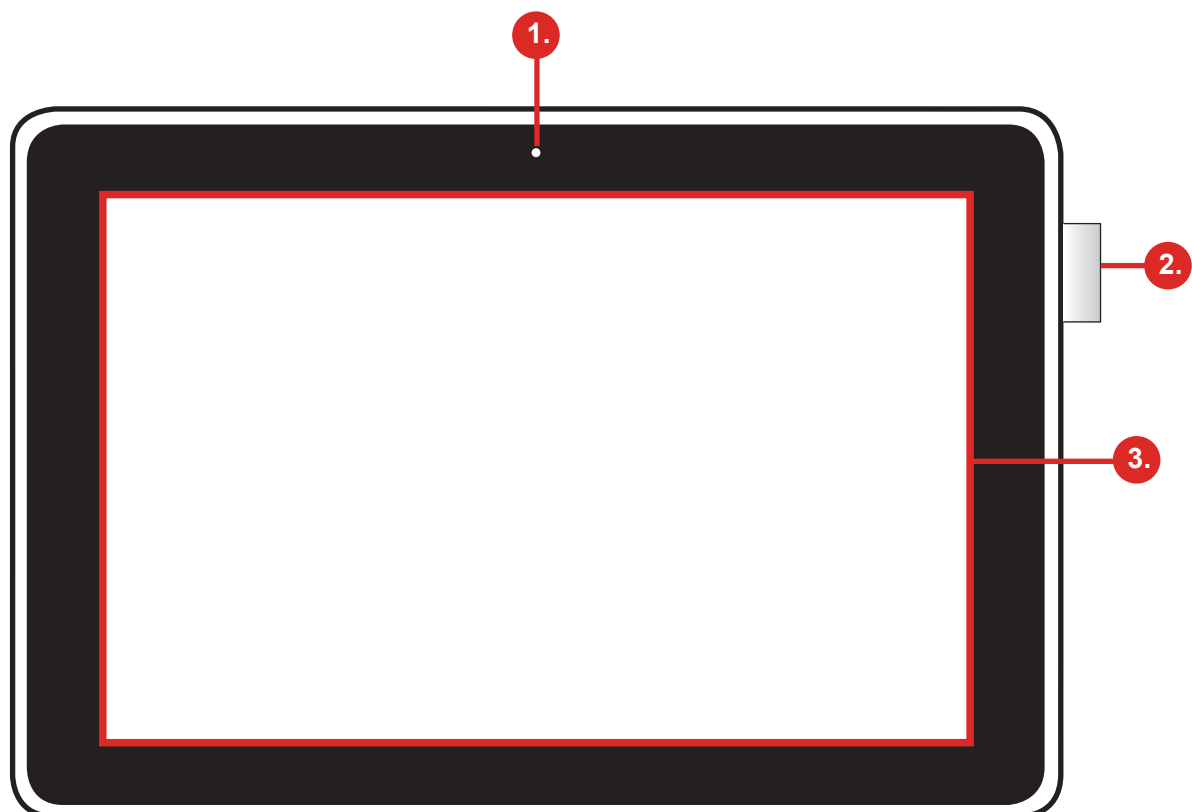
### Tablet Part

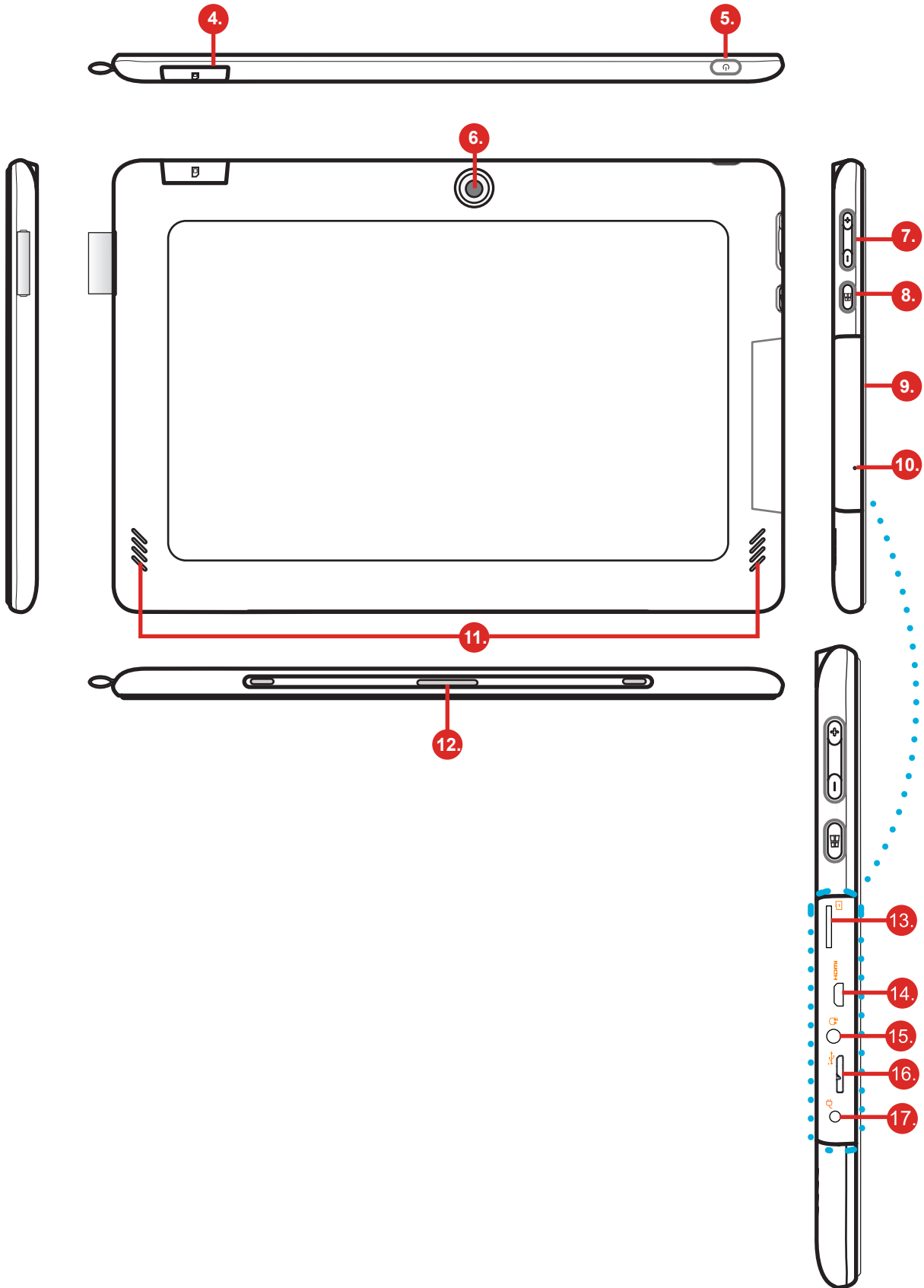
---



NOTE: The product's colour, I/O port, indicator location, and specification will depend upon the actually shipping product.

---





---

## 1 Front Camera

A device that allows you to record video or take photographs with your computer.

## 2 Pen Cap

To hang the Stylus pen.

## 3 LCD Screen

Displays of your notebook computer.

## 4 3G Door (Optional)

Support 3G function.

## 5 Power Button

Press this button to turn the computer's power on or off.

## 6 Back Camera

A device that allows you to record video or take photographs with your computer.

## 7 Volume Button

Press the volume button to decrease volume or the + to increase volume.

## 8 Windows Button

Press once to open the Start menu.

---

**9 I/O Door**

The door covers the I/O ports inside.

**10 Reset Hole**

Reset the Infinity:One.

**11 Stereo speakers**

Produce stereo sound.

**12 POGO Pin**

Connect to docking (keyboard part)

**13 Micro SD Card** 

Insert a microSD card into this slot.

**14 Micro HDMI** 

Supports high-definition digital video connections.

**15 Audio** 

Connects to audio devices.

**16 Micro USB 3.0** 

Connects to USB devices. A Micro USB to USB adapter is needed to connect to USB devices. Infinity:One can also be charged via this port.

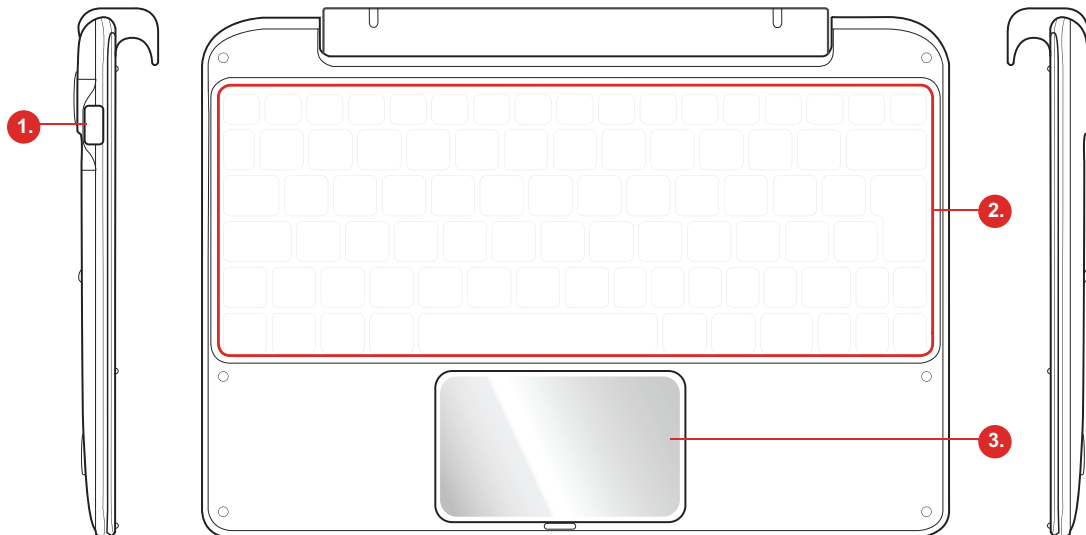
**17 DC-IN jack** 

Connects the AC adapter into this connector.



---

## Keyboard Part



### 1 USB 2.0

Connects an USB device.(such as USB Zip drive, keyboard or mouse) into this jack.

### 2 Keyboard

The keyboard provides keys with comfortable travel.

### 3 Touchpad pad

Touch-sensitive pointing device which functions like the mouse.



**CAUTION:** Do not put the computer on your LAP or other Parts of the body to avoid injury from the heat.

The embedded battery can neither be taken down nor be replaced.

---

---

## Chapter 3

# Getting started

---

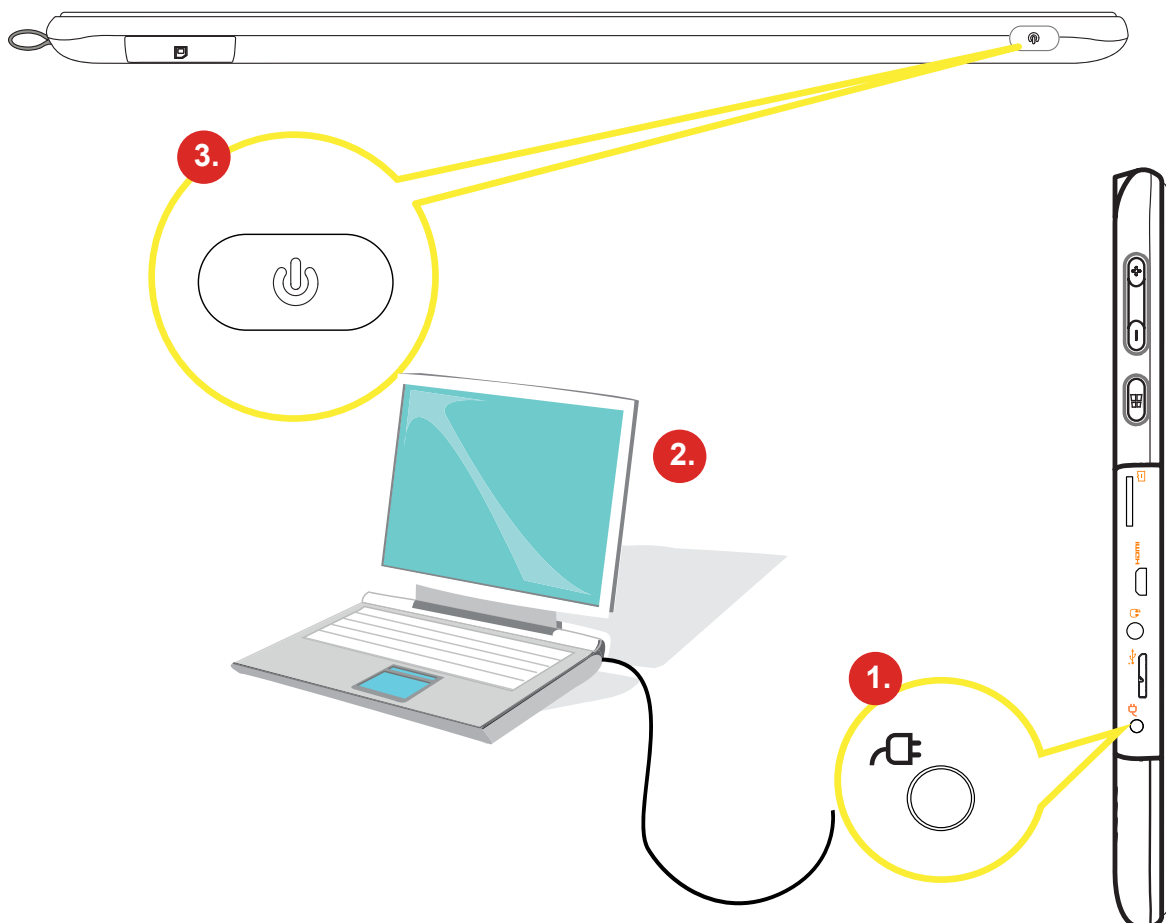
## 3.1 Preparing your Infinity:One

Note that the DC in adapter included in the package is approved for your Infinity:One; using other adapter may damage either the Infinity:One or other devices attached to it.

1. Plug DC in adapter into the DC in port of your Infinity:One.
2. Start charging the battery.

(For first-time use, you need to turn your Infinity:One off and charge it for 6 hours. After that you can recharge the battery as needed.)

3. Power on: Press the power button for 3 seconds to turn on your Infinity:One.



---

When power on mode :

- Sleep mode : Briefly press the power button to turn off the display and switch to Sleep mode.
- Waking up from Sleep mode : To wake up the Infinity:One from sleep mode, press the power button again. You'll need to unlock the screen.
- Power off : Long press the power button and hold it until a menu appears on the screen.



**CAUTION:** Do not use inferior extension cords as this may result in damage to your Infinity:One. If the Infinity:One comes with its own AC adapter, do not use a different adapter to power the computer and other electrical devices.

---

---

## 3.2 How to insert/remove the Micro SD card

Inserting the micro SD card:

1. Insert the Micro SD card into the Micro SD card slot, pushing gently until it clicks into place.
2. Wait for Infinity:One to recognise the Micro SD card.

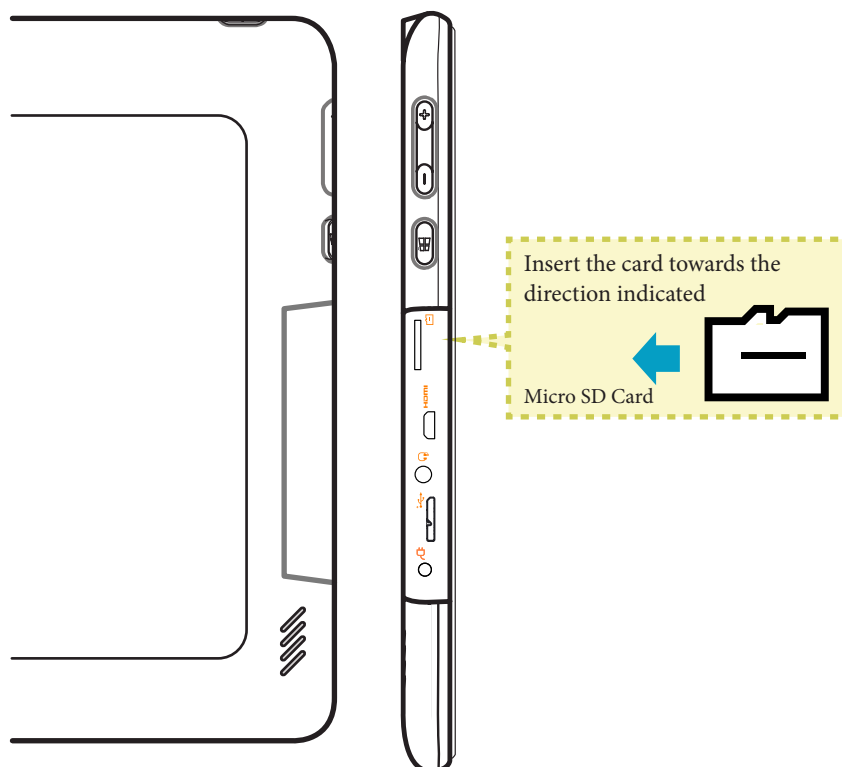


**CAUTION:** To prevent damage to information stored on the memory card, unmount the card before removing it from the device.

---

Removing the Micro SD card:

1. Push the Micro SD card in to eject it from its slot.
2. Slide the Micro SD card out from its slot.



---

## 3.3 Cleaning the screen

Follow these rules for cleaning the outside and handling your screen on the computer :

1. Turn off the system and disconnect all cables.
2. Use a damp, or cleaning cloth, soft, lint-free cloth with gentle water only and gently wipe the screen surface.
3. Do not spray liquid directly on the screen.

---

## Chapter 4

# BIOS setup

---

## 4.1 About BIOS Setup

### 4.1.1 When to Use BIOS Setup ?

You may need to run the BIOS Setup when:

- An error message appears on the screen during the system booting up and is requested to run SETUP.
- You want to change the default settings for customised features.
- You want to reload the default BIOS settings.

### 4.1.2 How to Run BIOS Setup ?

To run the BIOS Setup Utility, turn on the notebook and press the [Del] key during the POST procedure.

If the message disappears before you respond and you still wish to enter Setup, either restart the system by turning it OFF and ON, or simultaneously pressing [Ctrl]+[Alt]+[Del] keys to restart.

Be noted that the screen snaps and setting options in this chapter are for your references only. The actual setting screens and options on your Notebook may be different because of BIOS update.

The setup function only can be invoked by pressing [Del] key during POST that provide a approach to change some setting and configuration the user prefer, and the changed values will save in the NVRAM and will take effect after the system rebooted. The setup uses a menu interface to allow the user to configure their system and the features are briefly listed as follow.

Press [F7] key for Boot Menu.



**NOTE :** The drivers, BIOS and utilities bundled in the support DVD may vary by models and are subject to change without notice.

---



---

## 4.2 BIOS Setup Menu

Once you enter the BIOS Setup Utility, the Main Menu will appear on the screen. Select the tags to enter the other menus.

### Main Menu

Show system overview about memory size , main Storage and setting of system time and date.

### Advanced Menu

To select the feature only work with Intel platform + Windows.

### Security Menu

Install or clear the password settings for supervisor and user.

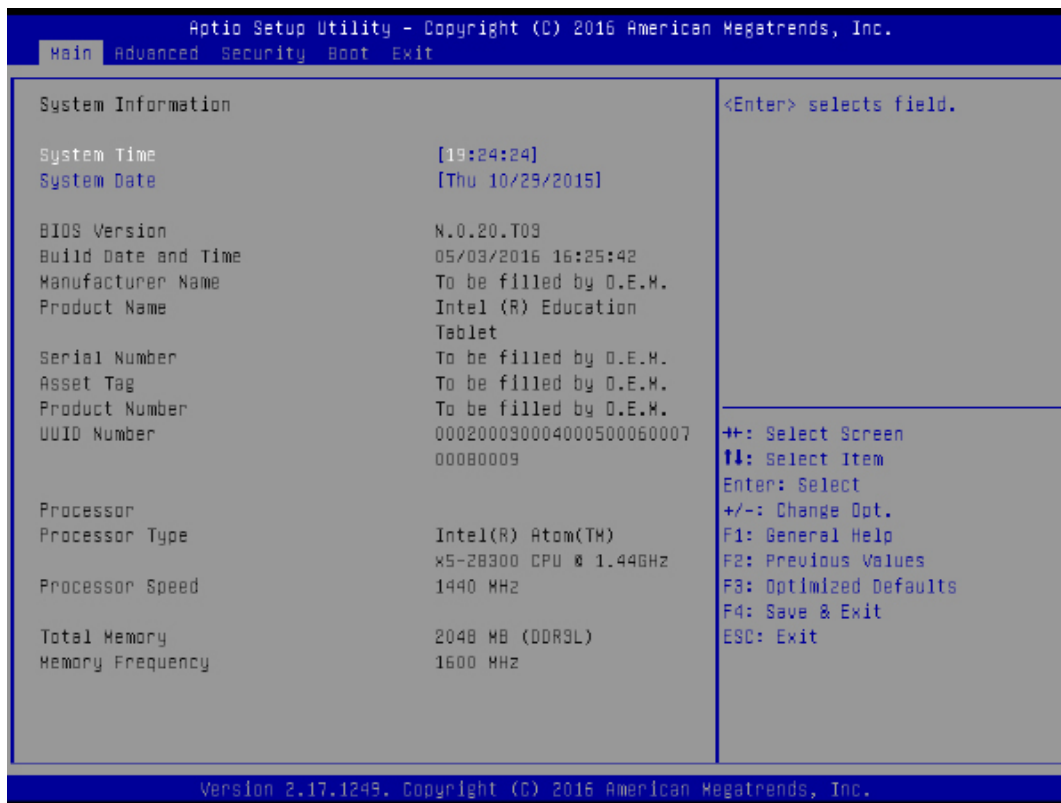
### Boot Menu

Configure Settings during System Boot.

### Save & Exit Menu

Save or discard the changes before leaving the BIOS Setup Menu.

## 4.2.1 Main Menu



- **Manufacturer Name**  
The system manufacturer.
- **Product Name**  
The product information.
- **Product Number**  
The product information.
- **UUID Number**  
The product information.

---

- Processor Type

This allow you to see processor's information.

- Processor Speed

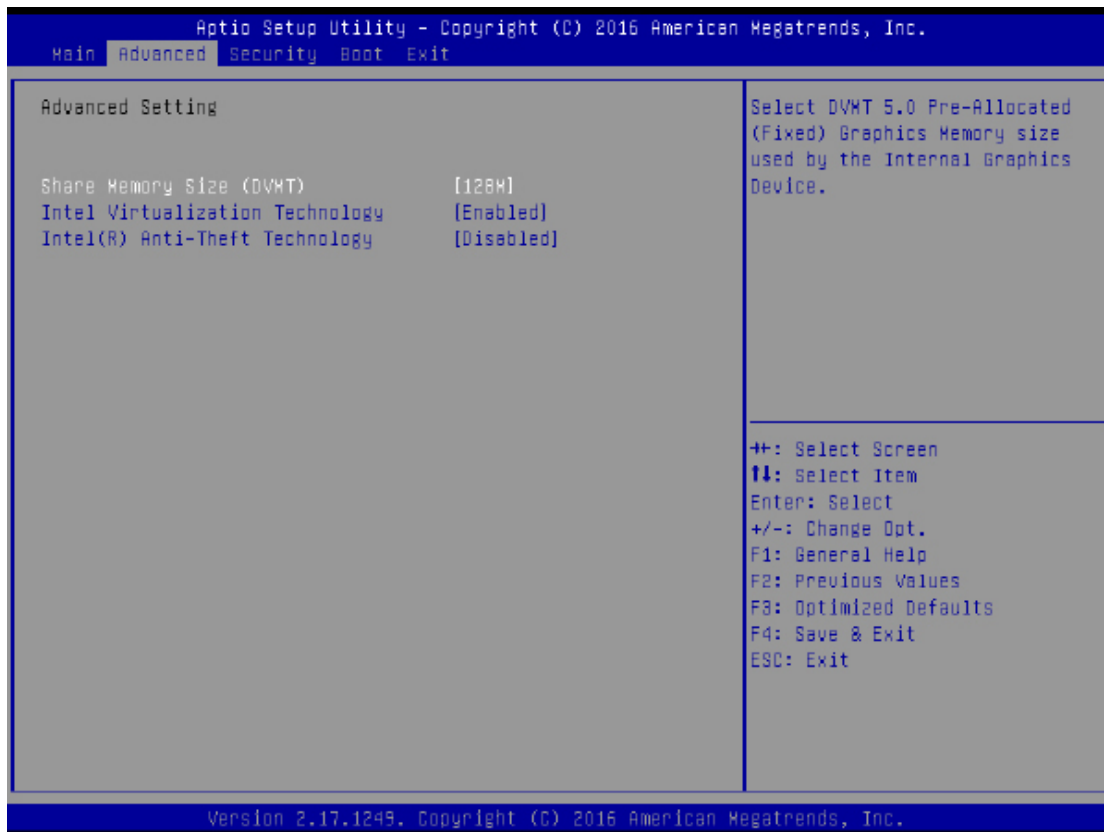
This allow you to see speed of processor.

- Memory Frequency

The working speed of memory.

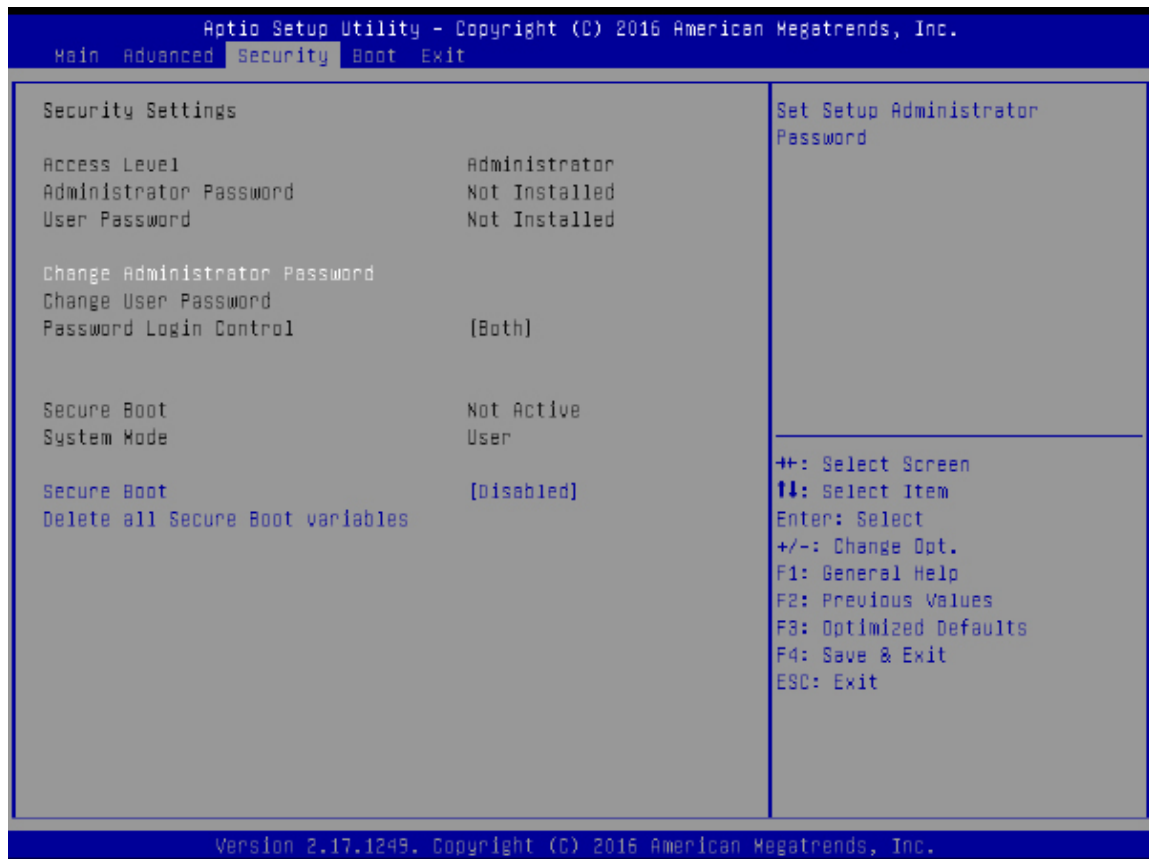
---

## 4.2.2 Advanced Menu



- Share Memory Size (DVMT)  
The pre-allocated graphic memory size.
- Intel Virtualization Technology  
To utilise the additional hardware capabilities by VT.
- Intel® Anti-Theft Technology  
Enable or disable BIOS AT code

## 4.2.3 Security Menu



### Password Login Control

To control password verify timing.

- Change Administrator Password
- Change User Password

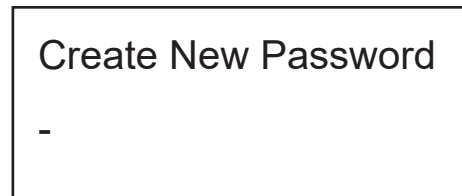
### Password Login Control

To control password verify timing.

- Delete all Secure Boot variables
- Force system to setup mode by clear all secure boot variables.

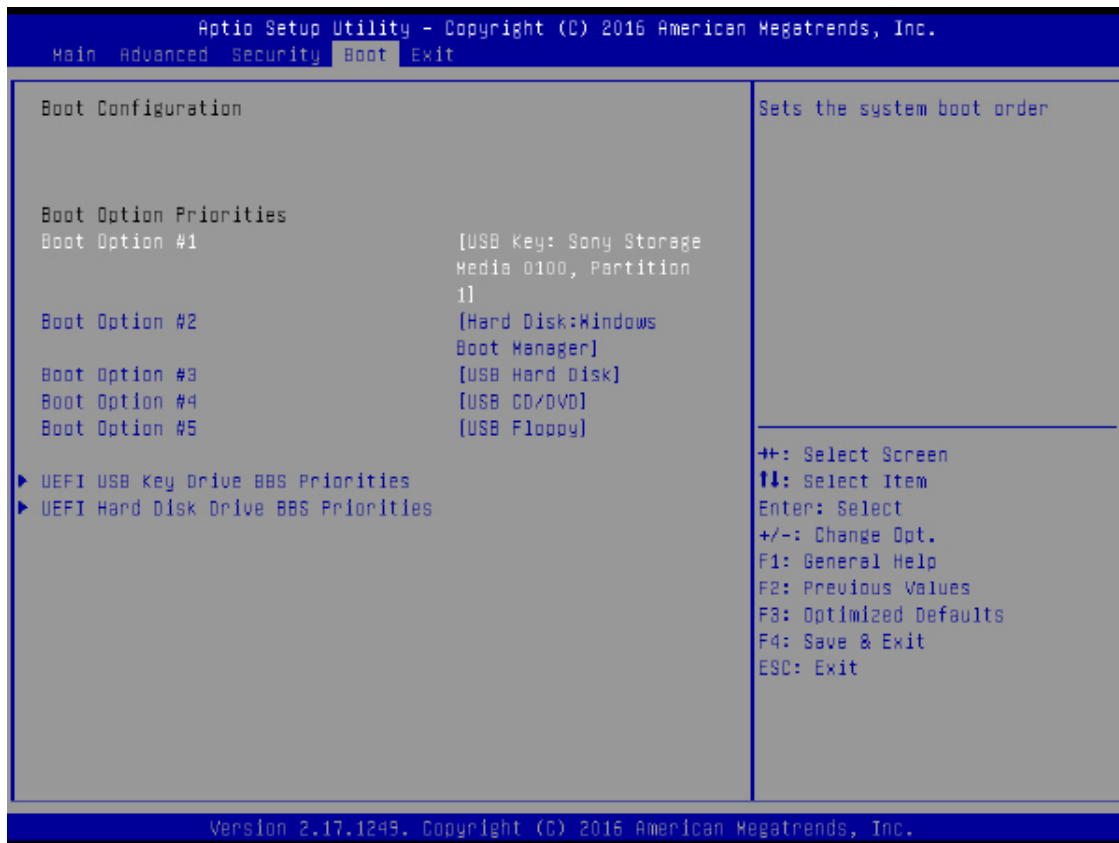
---

When Change Administrator Password or Change User Password item is selected, a message box shall appear on the screen as below :



---

## 4.2.4 Boot Menu

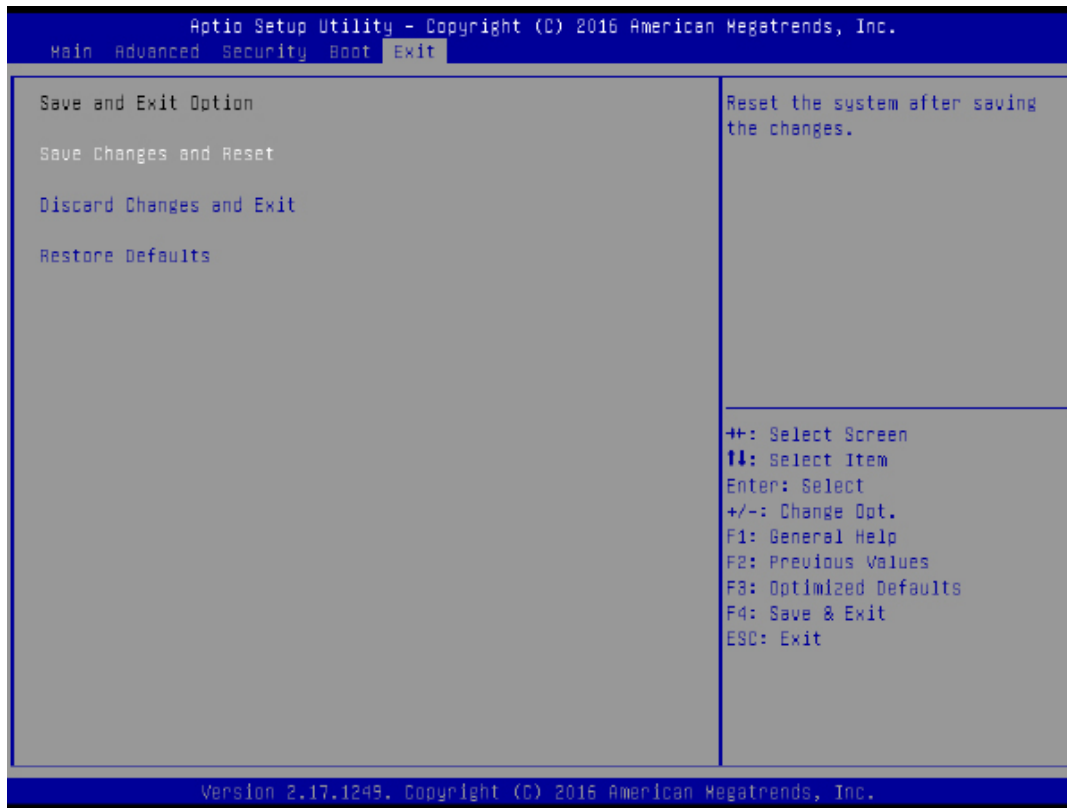


### Boot Option Priorities

Specifies the boot sequence from the available devices.

---

## 4.2.5 Save & Exit Menu



### Save Changes and Reset

Exit system setup after saving the changes. F4 key can be used for this operation.

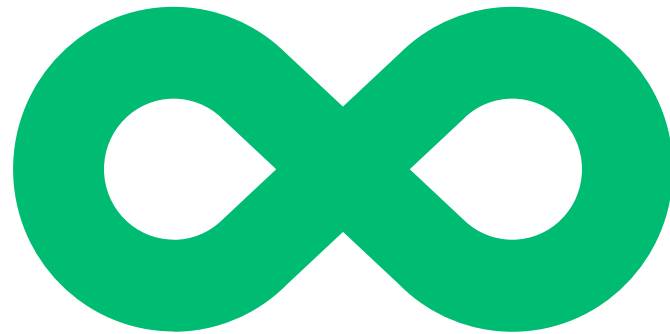
### Discard Changes and Exit

Exit system setup without saving any changes. ESC key can be used for this operation.

### Restore Defaults

Restore/Load Defaults values for all the setup options. F3 key can be used for this operation.





Infinity:One

For the latest updates and information, please visit:

[support.one-education.org](https://support.one-education.org)